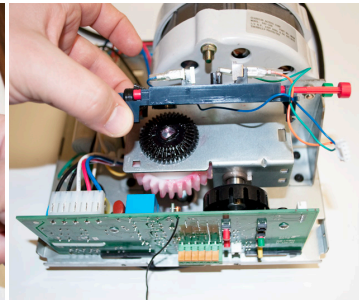
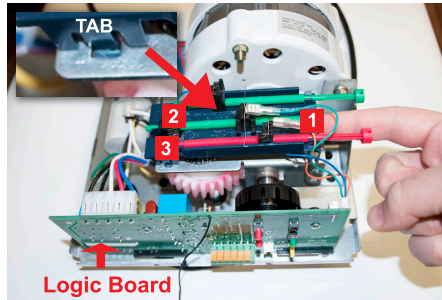
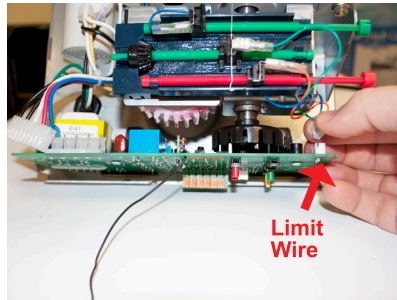
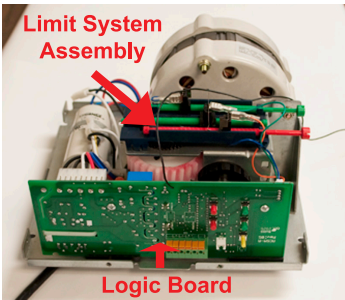
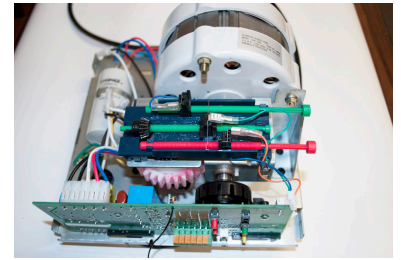
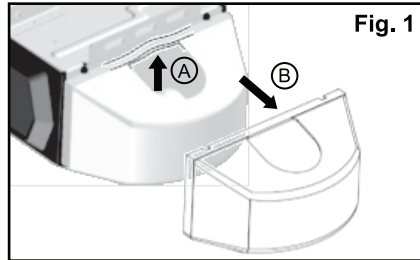


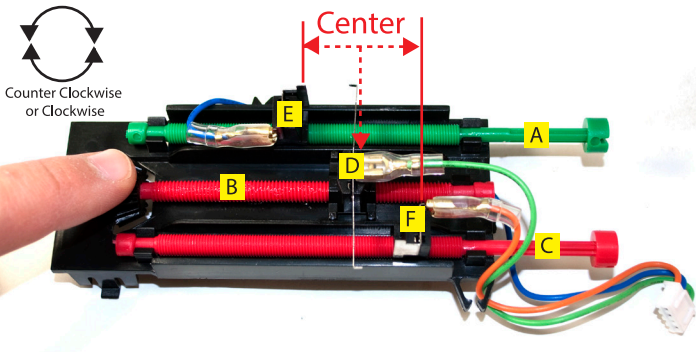
Limit Switch Removal and Reset

FOR BEST RESULTS IT IS RECOMMENDED TO REMOVE THE GARAGE DOOR OPENER HEAD UNIT FROM THE RAIL SYSTEM, REMOVE LIGHT DOMES & PLACE AS SHOWN ON A FLAT SURFACE.

1. Remove the light lens cover.
 (A) Lift up the edge of the light cover
 (B) Pull slightly outward as shown in fig 1.
2. Using a Phillips screwdriver remove the eight screws securing the two metal side plates and plastic motor cover. Remove the metal side plates and plastic motor cover.



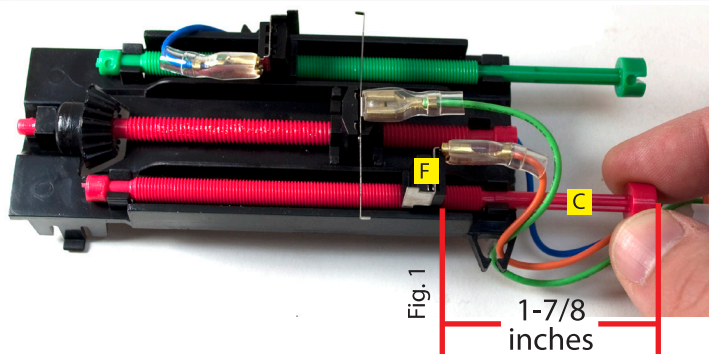
3. Remove the limit system assembly. First remove the limit wire from the logic board. Second push in the three tabs with your finger until you feel them disengage. Finish by pulling up gently on the limit system assembly to disengage.



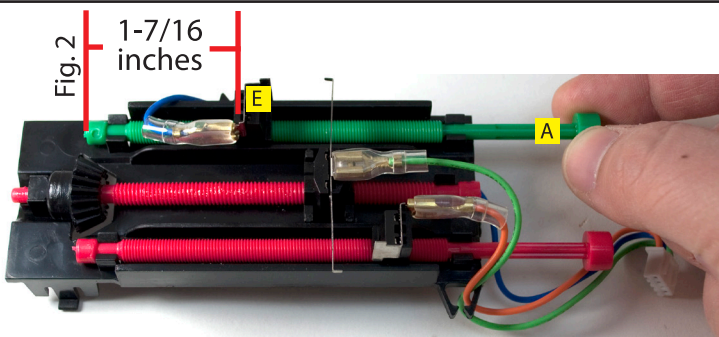
Resetting Limit Switch

4. With limit switch removed, adjust* the main travel limit screw (B) until the main stop module (D) is located in the center of (E) and (F).

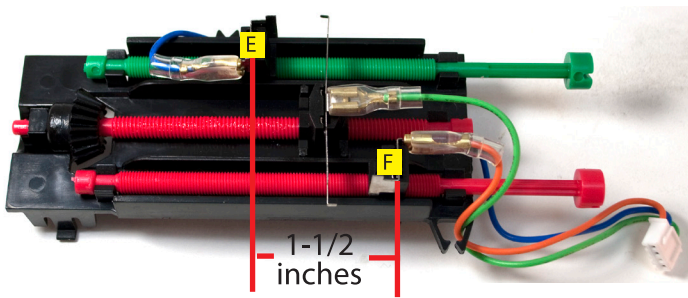
*Note: Depending on where the main stop module (D) is located turn the main travel limit screw (B) either clockwise or counter clockwise to center the main stop module (D).



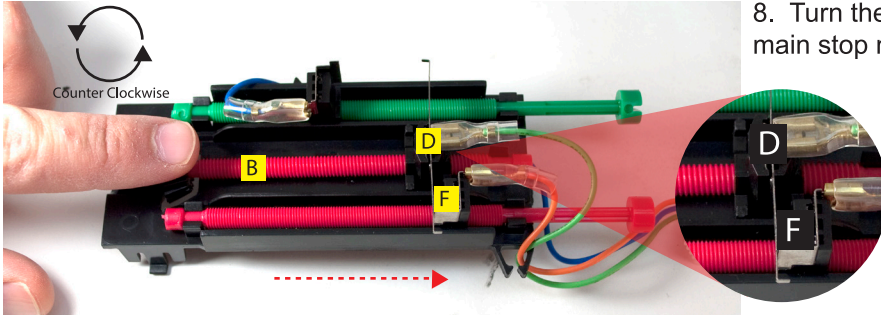
5. Adjust the close limit screw (C) by turning it either clockwise or counter clockwise until the close limit stop (F) is set according to the measurements shown in figure 1.



6. Adjust the open limit screw (A) by turning it either clockwise or counter clockwise until the open limit stop (E) is set according to the measurements shown in figure 2.



7. If properly adjusted Close limit stop (F) and Open limit stop (E) should be exactly 1-1/2 inches apart.

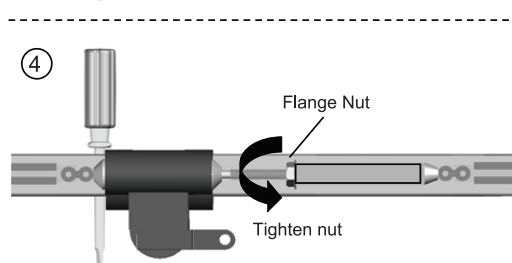
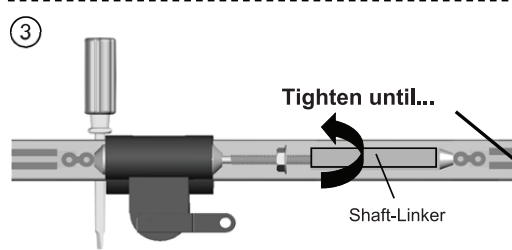
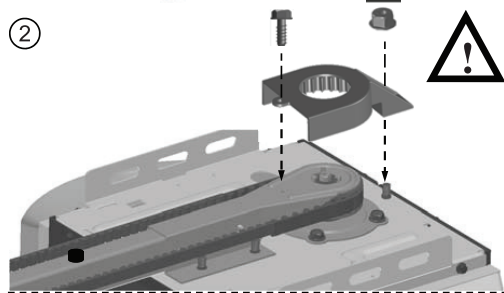
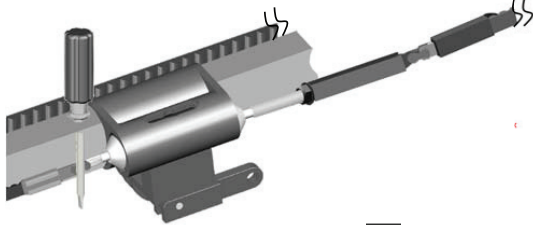
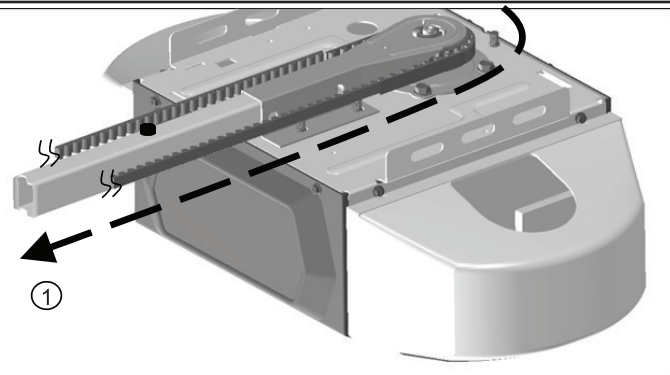


8. Turn the main limit travel screw (B) counter clockwise until the main stop module lightly touches the close limit stop (F)

9. Reinstall the limit system assembly and opener cover by reversing all steps.

10. IMPORTANT FINAL STEP!!

Opener belt must be reset to the factory preset position. Follow the steps below to reset the belt. This is located on page 7 of the manual.



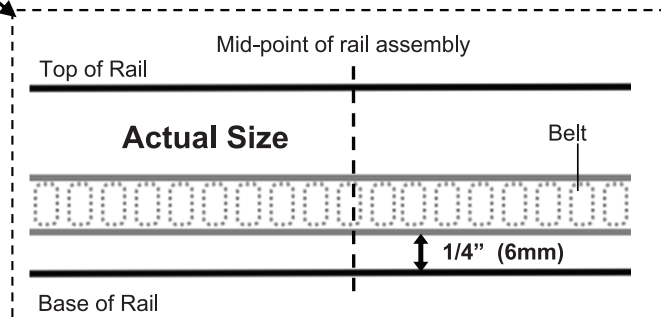
To Connect and Tension the Belt

Follow steps shown in Fig.1 to connect & tighten the belt:

1. With the trolley positioned against the screwdriver, pull the remaining belt straight along the rail and engage belt teeth around the sprocket. (Make sure the belt is not twisted around the rail.)
2. After the belt is connected, attach the Sprocket Cover to the opener with the screw and nut provided.

⚠ THE SPROCKET COVER MUST BE SECURELY INSTALLED!

3. Rotate the Shaft Linker towards the Trolley Shaft until the belt is slightly loose about 1/4" (6mm) above the base of the rail, referring to the actual-sized illustration below.



4. Tighten the Flange Nut on Trolley Shaft against the Shaft-Linker.

Remove the temporary screw driver holding the position of the trolley.